



Lights Out... ZERO FAILURES™

Patented Medium-Duty Retrofit Disc with Isolated ABS ring

- Protective plating to prevent corrosion and extend service life
- Precision machined alloy ring for improved signal strength
- Additional cost per mile savings with CarbonMetallic pads

ABS Tone Ring Corrosion Test Comparison:

Competitor Performance Friction

ZERO FAILURES™

Performance Friction

- No Rust on pad
- No peeling after salt spray test and high temperature exposure

Competitor A

- No coating left
- 100% red rust

Competitor B

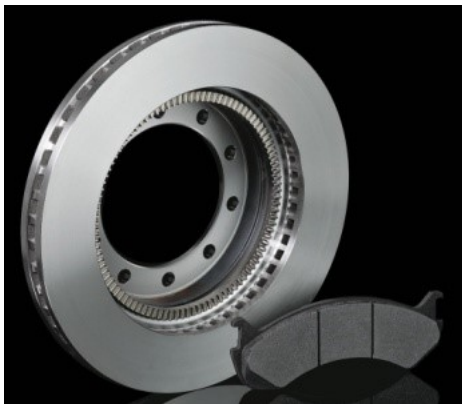
- Severe peeling
- Extensive rust

CarbonMetallic™ Brake Pads

ZERO FAILURES Rotors

The most trusted brand for the most severe brake applications





Product Highlights

Feature or benefit

What Differentiates Your Product from the Competition

Overall Features/Benefits	100% American made in Clover, SC
Overall Features/Benefits	PFC CarbonMetallic™ brake pads proudly meet and exceed all environmental requirements by being 100% copper compliant.
Overall Features/Benefits	PFC's Anti-Corrosion Pad Technology prevents rust, peeling and corrosion.
Overall Features/Benefits	Every single PFC rotor produced is 100% symmetrical.
Overall Features/Benefits	Every surface of a ZERO FAILURE™ rotor is machined. Ensuring the elimination of heat issues such as cracking and warping.
Overall Features/Benefits	PFC's Retrofit disc feature a patented isolated tone ring for improved ABS signal strength, reduced heat transfer and corrosion prevention.
Overall Features/Benefits	PFC pads and rotors deliver the lowest cost-per-mile in the industry. -One more maintenance cycle GUARANTEED.

Top Movers - Performance Friction

Material Number	Material Description	Material Description 2
PFR 381 081 20	PFC ZERO FAILURE ROTOR	(2004-2015) Thomas C2, front axle, Hat shaped 10 hole rotor
PFR 381 181 20	PFC ZERO FAILURE ROTOR	(2004-2019) Thomas C2, rear axle, U Shaped 10 hole rotor
PFR 381 113 20	PFC ZERO FAILURE ROTOR	(2016-2019) Thomas C2, front axle, Hat shaped 10 hole rotor
PFR 381 082 20	PFC ZERO FAILURE ROTOR	(2004-2015) Thomas C2, front axle, Hat shaped 10 hole rotor
PFR 786 12	PFC CarbonMetallic brake pad	Bosch Pin Slider 66mm Caliper
PFR 786 11	PFC CarbonMetallic brake pad	Bosch Pin Slider 73mm Caliper
PFR 786 13	PFC CarbonMetallic brake pad	Bosch Pin Slider 73mm Caliper
PFR 0784 12	PFC CarbonMetallic brake pad	GMC 3500
PFR 769 12	PFC CarbonMetallic brake pad	Meritor Quadraulic Caliper
PFR 1369 12	PFC CarbonMetallic Air Disc brake pad	Bendix ADB22X Caliper

General Product Information

PFC Sales Sheet (<http://pfcbrakes.com/Applications/Fleet>)

PFC Sales Material (http://pfcbrakes.com/Portals/0/DNNGalleryPro/uploads/2018/6/20/_AMK_PFC_F&B_LOW%20RES%20v2.pdf)

PFC FAQ Page (<http://pfcbrakes.com/about/faqs>)

Warranty Information

PFC Warranty Information (<http://pfcbrakes.com/contact/warranties>)

Last updated: Tuesday, 31 March 2020 06:59 PM

[Back to Top](#)



