



Air Disc Brake Rotors

Air Disc Brake Rotors

Precision. Durability. Performance.

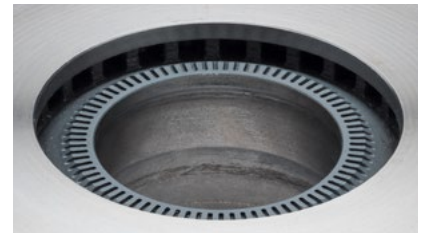


The Midland line of air disc brake rotors delivers quality, value, and long service life.

Midland offers OEM-quality medium and heavy-duty rotors for commercial truck and trailer, transit, defense, emergency and off-highway applications.

Our comprehensive lineup of "Flat", "U", and "Hat" rotors covers most major air disc brake systems from Bendix®, Knorr-Bremse, Meritor®, WABCO, Hendrickson®, and Haldex.

- Developed and manufactured under ISO/TS 16949 standards
- Cast from premium raw materials for clean, consistent, high-grade iron
- Molded and machined to deliver uniformity, precision, and superior surface finish
- Tested to meet stringent durability standards



ABS tone rings



Quality medium and heavy-duty rotors for truck, trailer, and transit

Table of Contents

Truck Rotors

MPBR71603	WABCO PAN™ 19-1	2
MPBR71604	WABCO PAN™ 19-1	2
MPBR76810	Haldex DB22LT	3
MPBR73601	Meritor® ADB-1560	3
MPBR74601	Meritor® ADB-1560	4
MPBR76620	Meritor® EX225	4
MPBR76624	Meritor® EX225L	5
MPBR76628	Meritor® EX225L	5

Truck / Trailer Rotors

MPBR76694	Bendix® / Knorr-Bremse ADB22X™ and ADB225™	6
MPBR76617	Bendix® / Knorr-Bremse ADB22X™ and ADB225™	6
MPBR76618	Bendix® / Knorr-Bremse ADB22X™ and ADB225™	7
MPBR76801	WABCO PAN™ 22	7

Trailer Rotors

MPBR75180	WABCO PAN™ 17	8
MPBR71601	WABCO PAN™ 19	8
MPBR71680	WABCO PAN™ 19	9
MPBR76613	WABCO PAN™ 22	9
MPBR76619	WABCO PAN™ 22	10
MPBR76626	SAF-HOLLAND	10
MPBR76901	WABCO MAXX™	11

Transit / Coach Rotors

MPBR76603	Knorr-Bremse SB/SN7	11
MPBR76604	Knorr-Bremse SB/SN7	12
MPBR76611	Knorr-Bremse SB/SN7	12
MPBR76612	Knorr-Bremse SB/SN7	13
MPBR76641	Knorr-Bremse SB/SN7	13
MPBR76642	Knorr-Bremse SB/SN7	14
MPBR76602A	Meritor®	14
MPBR76605	Meritor®	15
MPBR76608	Meritor®	15
MPBR76621	Meritor®	16
MPBR76601A	Meritor® D-LISA	16
MPBR76606	Meritor® D-LISA	17
MPBR76690	Meritor® ELSA 225-3	17
MPBR76691	Meritor® ELSA 225-3	18
MPBR56641	Meritor® EX225	18
MPBR56642	Meritor® EX225	19
MPBR76607	Setra, MCI and Mercedes	19
MPBR76609	Setra and Mercedes	20
MPBR76610	Van Hool	20
MPBR76615	Setra and Mercedes	21
MPBR76616	New Flyer® and MAN	21

Standard and Metric Rotor Specifications 22 – 23

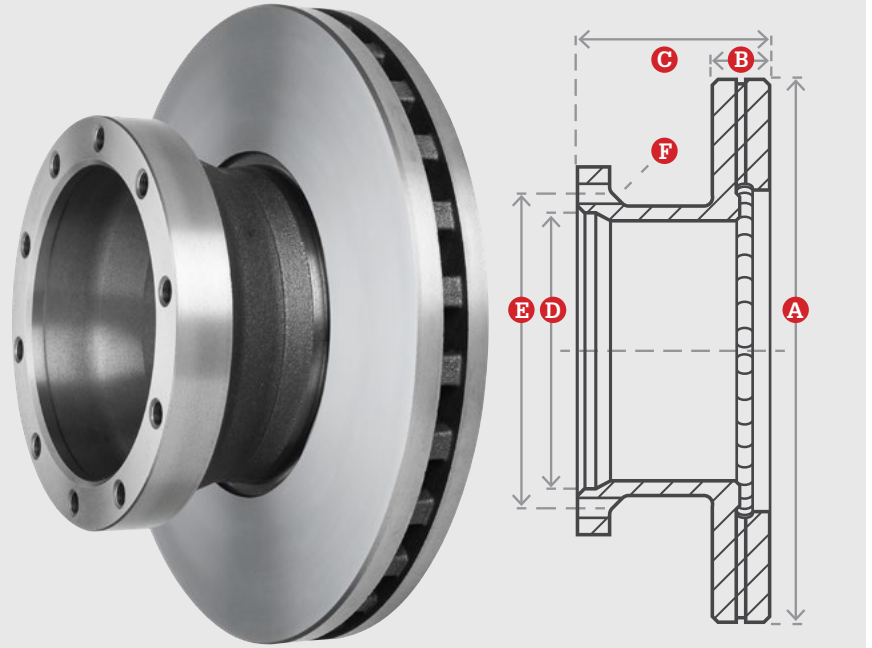
Rotor Troubleshooting Guide 24 – 27

Competitive Rotor Cross Reference 28 – 29

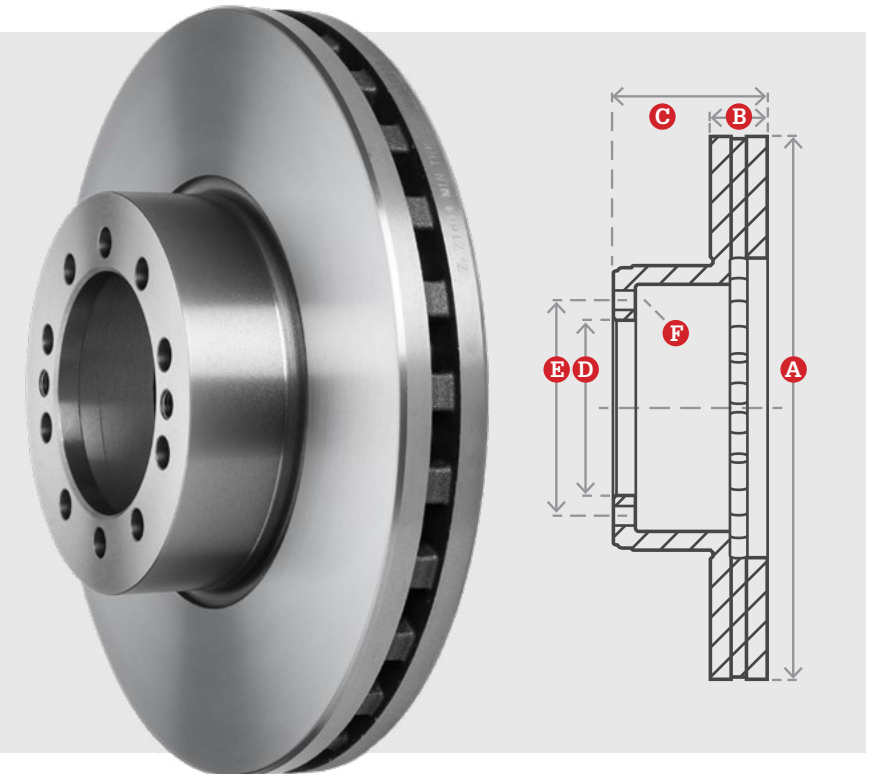
Air Disc Brake Rotors

Developed and manufactured under ISO/TS 16949 standards

MPBR71603	
Vehicle Type	Truck
System / Application	WABCO PAN™ 19-1
Rotor Type	U
Rotor Weight	63 lb / 29 kg
Overall Diameter	A 14.76 in / 375 mm
Disc Thickness	B 1.77 in / 44.96 mm
Overall Depth	C 5.75 in / 146.05 mm
Pilot Diameter	D 7.05 in / 179.07 mm
Bolt Circle Diameter	E 8.23 in / 209.04 mm
Hole Diameter	F M14 x 1.5
Hole Count	10
Minimum Thickness	1.57 in / 40 mm
ABS Tone Ring	Cast-In


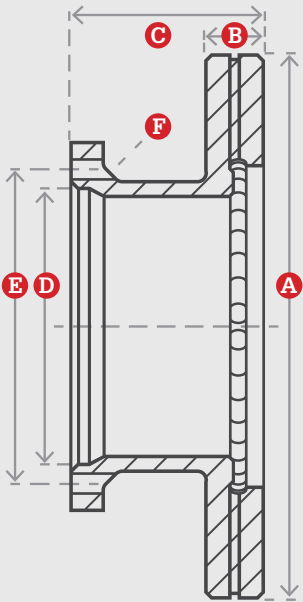


MPBR71604	
Vehicle Type	Truck
System / Application	WABCO PAN™ 19-1
Rotor Type	Hat
Rotor Weight	52 lb / 24 kg
Overall Diameter	A 14.76 in / 375 mm
Disc Thickness	B 1.77 in / 44.96 mm
Overall Depth	C 3.90 in / 99.06 mm
Pilot Diameter	D 4.61 in / 117.09 mm
Bolt Circle Diameter	E 5.67 in / 144.02 mm
Hole Diameter	F 0.59 in / 14.99mm + 2 extra holes, M14 x 12
Hole Count	10 + 2
Minimum Thickness	1.57 in / 40 mm
ABS Tone Ring	No



Cast from premium raw materials for consistent, high-grade iron

MPBR76810	
Vehicle Type	Truck
System / Application	Haldex DB22LT
Rotor Type	U
Rotor Weight	76 lb / 35 kg
Overall Diameter	A 16.93 in / 430 mm
Disc Thickness	B 1.77 in / 44.96 mm
Overall Depth	C 5.90 in / 149.86 mm
Pilot Diameter	D 8.66 in / 219.96 mm
Bolt Circle Diameter	E 9.82 in / 249.43 mm
Hole Diameter	F 0.63"-11
Hole Count	10
Minimum Thickness	1.63 in / 41 mm
ABS Tone Ring	Cast-In

MPBR73601	
Vehicle Type	Truck
System / Application	Meritor® ADB-1560
Rotor Type	U
Rotor Weight	66 lb / 30 kg
Overall Diameter	A 15.24 in / 387 mm
Disc Thickness	B 1.75 in / 44.45 mm
Overall Depth	C 5.77 in / 146.56 mm
Pilot Diameter	D 9.45 in / 240.03 mm
Bolt Circle Diameter	E 11.25 in / 285.75 mm
Hole Diameter	F 0.81"
Hole Count	10
Minimum Thickness	1.63 in / 41 mm
ABS Tone Ring	No




Air Disc Brake Rotors

Molded and machined for uniformity, precision and finish

MPBR74601	
Vehicle Type	Truck
System / Application	Meritor® ADB-1560
Rotor Type	U
Rotor Weight	65 lb / 30 kg
Overall Diameter	A 15.24 in / 387 mm
Disc Thickness	B 1.75 in / 44.45 mm
Overall Depth	C 6.12 in / 155.45 mm
Pilot Diameter	D 8.76 in / 222.50 mm
Bolt Circle Diameter	E 11.25 in / 285.75 mm
Hole Diameter	F 0.82"
Hole Count	10
Minimum Thickness	1.63 in / 41 mm
ABS Tone Ring	No

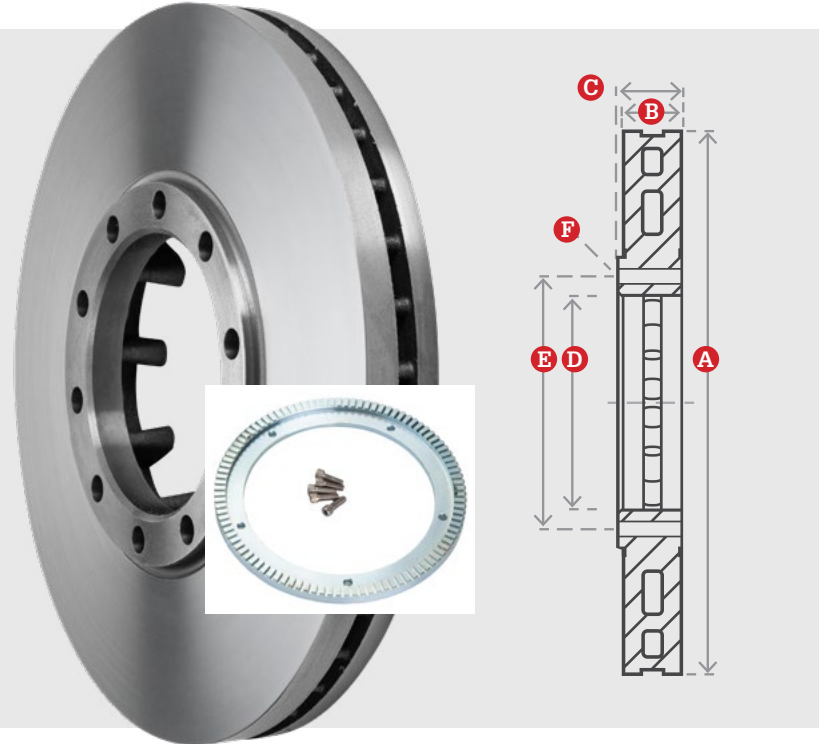



MPBR76620	
Vehicle Type	Truck
System / Application	Meritor® EX225
Rotor Type	U
Rotor Weight	83 lb / 38 kg
Overall Diameter	A 16.93 in / 430 mm
Disc Thickness	B 1.77 in / 44.96 mm
Overall Depth	C 6.28 in / 159.51 mm
Pilot Diameter	D 8.13 in / 206.50 mm
Bolt Circle Diameter	E 11.25 in / 285.75 mm
Hole Diameter	F M16-1.5
Hole Count	10
Minimum Thickness	1.53 in / 39 mm
ABS Tone Ring	No

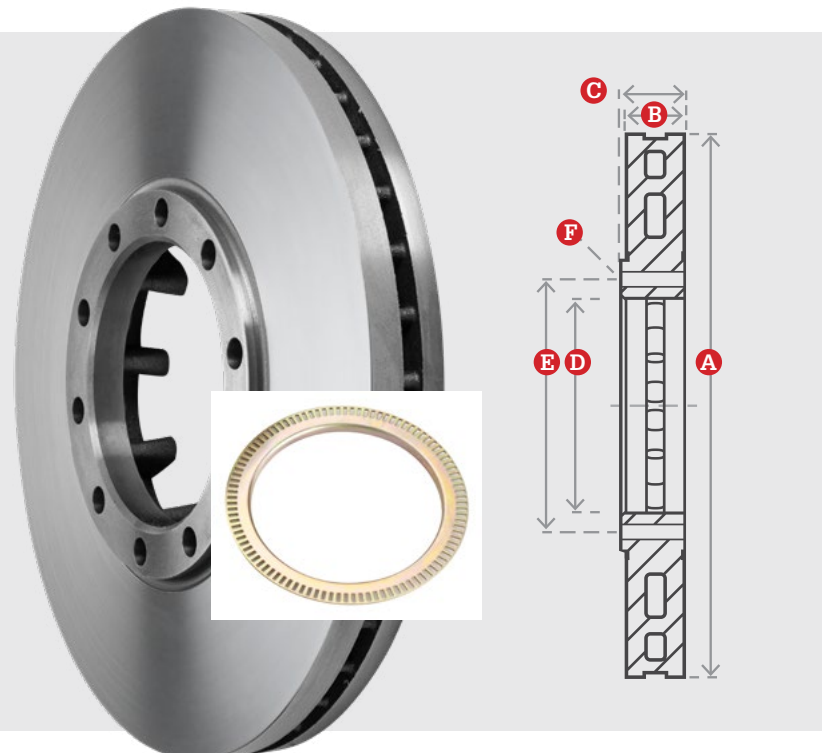



Best-performance metallurgy

MPBR76624	
Vehicle Type	Truck
System / Application	Meritor® EX225L
Rotor Type	Flat
Rotor Weight	70 lb / 32 kg
Overall Diameter	A 17.09 in / 434 mm
Disc Thickness	B 1.77 in / 44.96 mm
Overall Depth	C 2.09 in / 53.09 mm
Pilot Diameter	D 6.56 in / 166.62 mm
Bolt Circle Diameter	E 7.86 in / 199.64 mm
Hole Diameter	F 0.66"
Hole Count	10
Minimum Thickness	1.46 in / 37 mm
ABS Tone Ring	Bolt-On



MPBR76628	
Vehicle Type	Truck
System / Application	Meritor® EX225L
Rotor Type	Flat
Rotor Weight	70 lb / 32 kg
Overall Diameter	A 17.09 in / 434 mm
Disc Thickness	B 1.77 in / 44.96 mm
Overall Depth	C 2.09 in / 53.09 mm
Pilot Diameter	D 6.56 in / 166.62 mm
Bolt Circle Diameter	E 7.86 in / 199.64 mm
Hole Diameter	F 0.66"
Hole Count	10
Minimum Thickness	1.46 in / 37 mm
ABS Tone Ring	Bolt-On



Air Disc Brake Rotors

Innovative, practical, OEM-quality products

MPBR76694	
Vehicle Type	Truck / Trailer
System / Application	Bendix® / Knorr-Bremse ADB22X™
Rotor Type	Flat / Spline
Rotor Weight	56 lb / 25 kg
Overall Diameter	A 17.00 in / 432 mm
Disc Thickness	B 1.77 in / 44.96 mm
Overall Depth	C 1.77 in / 44.96 mm
Pilot Diameter	D 9.05 in / 229.87 mm
Bolt Circle Diameter	N/A
Hole Diameter	N/A
Hole Count	N/A
Minimum Thickness	1.46 in / 37 mm
ABS Tone Ring	No

Note: Aftermarket version - this replacement utilizes an attachment ring & bolts (pictured above) vs. the spring, spacer & bolt configuration.

MPBR76617	
Vehicle Type	Truck / Trailer
System / Application	Bendix® / Knorr-Bremse ADB22X™ and ADB225™
Rotor Type	U
Rotor Weight	76 lb / 35 kg
Overall Diameter	A 16.93 in / 430 mm
Disc Thickness	B 1.77 in / 44.96 mm
Overall Depth	C 5.91 in / 150.11 mm
Pilot Diameter	D 8.66 in / 219.96 mm
Bolt Circle Diameter	E 9.84 in / 249.94 mm
Hole Diameter	F 5/8"-11
Hole Count	10
Minimum Thickness	1.46 in / 37 mm
ABS Tone Ring	No

Note: Verify overall depth to distinguish MPBR76617 vs. MPBR76618.

Proven to meet durability and stopping distance requirements

MPBR76618	
Vehicle Type	Truck / Trailer
System / Application	Bendix® / Knorr-Bremse ADB22X™ and ADB225™
Rotor Type	U
Rotor Weight	74 lb / 34 kg
Overall Diameter	A 16.93 in / 430 mm
Disc Thickness	B 1.77 in / 44.96 mm
Overall Depth	C 5.45 in / 138.43 mm
Pilot Diameter	D 8.66 in / 219.96 mm
Bolt Circle Diameter	E 9.84 in / 249.94 mm
Hole Diameter	F 5/8"-11
Hole Count	10
Minimum Thickness	1.46 in / 37 mm
ABS Tone Ring	No



Note: Verify overall depth to distinguish MPBR76618 vs. MPBR76617.


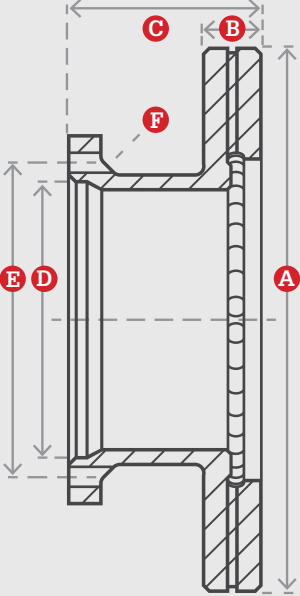
MPBR76801	
Vehicle Type	Truck / Trailer
System / Application	WABCO PAN™ 22
Rotor Type	Flat
Rotor Weight	71 lb / 32 kg
Overall Diameter	A 16.93 in / 430 mm
Disc Thickness	B 1.77 in / 44.96 mm
Overall Depth	C 2.09 in / 53.09 mm
Pilot Diameter	D 6.56 in / 166.62 mm
Bolt Circle Diameter	E 7.86 in / 199.64 mm
Hole Diameter	F 5/8"-18
Hole Count	10
Minimum Thickness	1.53 in / 39 mm
ABS Tone Ring	Bolt-On




Air Disc Brake Rotors

Precision. Durability. Performance.

MPBR75180	
Vehicle Type	Trailer
System / Application	WABCO PAN™ 17
Rotor Type	U
Rotor Weight	42 lb / 19 kg
Overall Diameter	A 12.80 in / 325 mm
Disc Thickness	B 1.34 in / 34.04 mm
Overall Depth	C 5.85 in / 148.59 mm
Pilot Diameter	D 6.81 in / 172.97 mm
Bolt Circle Diameter	E 7.72 in / 196.09 mm
Hole Diameter	F M14-2
Hole Count	8
Minimum Thickness	1.11 in / 28 mm
ABS Tone Ring	Cast-In

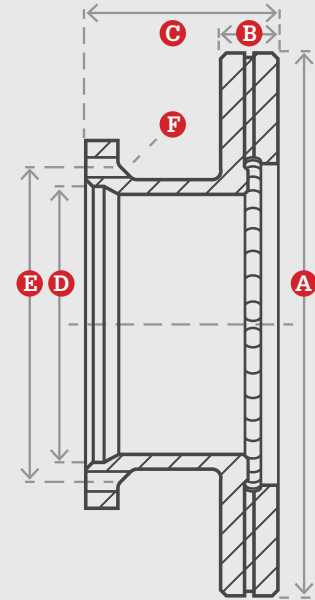
MPBR71601	
Vehicle Type	Trailer
System / Application	WABCO PAN™ 19
Rotor Type	U
Rotor Weight	61 lb / 28 kg
Overall Diameter	A 14.84 in / 377 mm
Disc Thickness	B 1.77 in / 44.96 mm
Overall Depth	C 5.91 in / 150.11 mm
Pilot Diameter	D 8.66 in / 219.96 mm
Bolt Circle Diameter	E 9.82 in / 249.43
Hole Diameter	F M16-2
Hole Count	10
Minimum Thickness	1.53 in / 39 mm
ABS Tone Ring	Cast-In




Note: Replaces CT832.

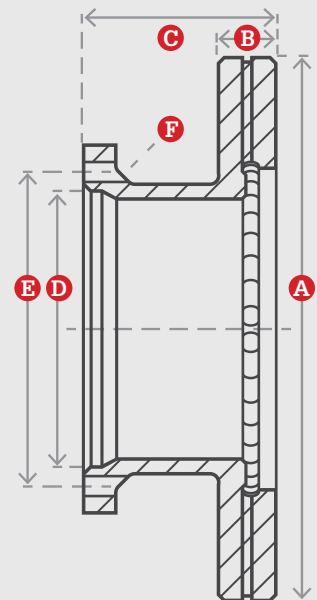
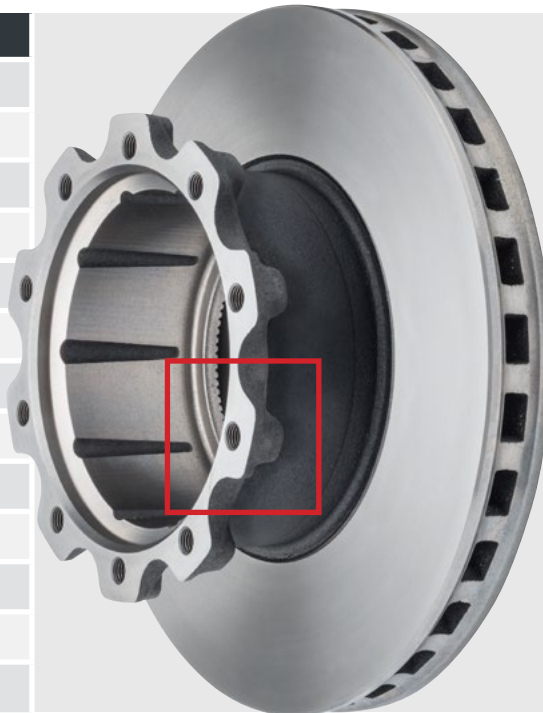
Quality medium and heavy-duty rotors for truck, trailer, and transit

MPBR71680	
Vehicle Type	Trailer
System / Application	WABCO PAN™ 19
Rotor Type	U
Rotor Weight	57 lb / 26 kg
Overall Diameter	A 14.76 in / 375 mm
Disc Thickness	B 1.77 in / 44.96 mm
Overall Depth	C 5.45 in / 138.43 mm
Pilot Diameter	D 6.65 in / 168.91 mm
Bolt Circle Diameter	E 7.72 in / 196.09 mm
Hole Diameter	F M14-2
Hole Count	8
Minimum Thickness	1.45 in / 37 mm
ABS Tone Ring	Cast-In



Note: Replaces CT808.

MPBR76613	
Vehicle Type	Trailer
System / Application	WABCO PAN™ 22
Rotor Type	U
Rotor Weight	71 lb / 32 kg
Overall Diameter	A 16.93 in / 430 mm
Disc Thickness	B 1.77 in / 44.96 mm
Overall Depth	C 5.91 in / 150.11 mm
Pilot Diameter	D 8.66 in / 219.96 mm
Bolt Circle Diameter	E 9.82 in / 249.43 mm
Hole Diameter	F M16-2
Hole Count	10
Minimum Thickness	1.53 in / 39 mm
ABS Tone Ring	Cast-In

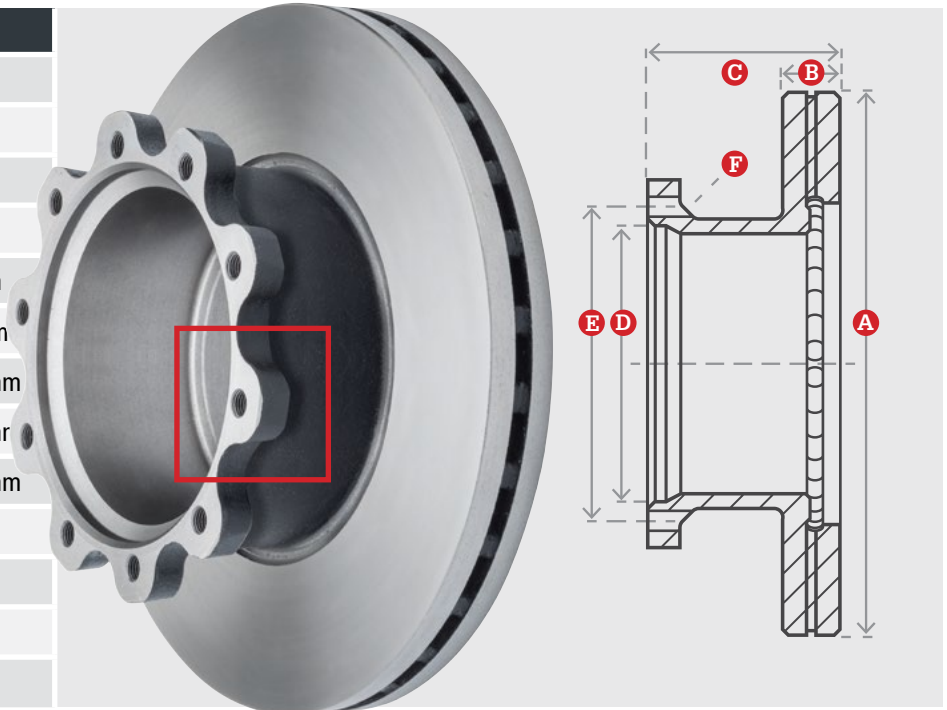


Note: Square lug design. ABS ring is recessed from brake surface.

Air Disc Brake Rotors

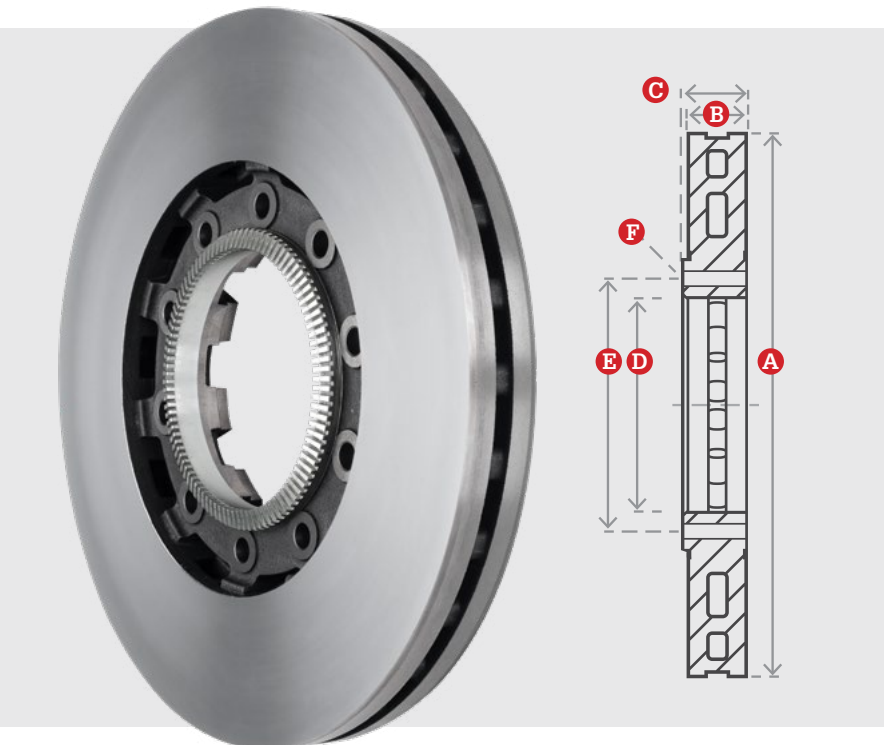
Developed and manufactured under ISO/TS 16949 standards

MPBR76619	
Vehicle Type	Trailer
System / Application	WABCO PAN™ 22
Rotor Type	U
Rotor Weight	71 lb / 32 kg
Overall Diameter	A 16.93 in / 430 mm
Disc Thickness	B 1.77 in / 44.96 mm
Overall Depth	C 5.91 in / 150.11 mm
Pilot Diameter	D 8.65 in / 219.71 mm
Bolt Circle Diameter	E 9.82 in / 249.43 mm
Hole Diameter	F M16-2
Hole Count	10
Minimum Thickness	1.50 in / 38 mm
ABS Tone Ring	Cast-In



Note: Curved lug design. ABS ring flush with brake surface.

MPBR76626	
Vehicle Type	Trailer
System / Application	SAF-HOLLAND
Rotor Type	Flat
Rotor Weight	71 lb / 32 kg
Overall Diameter	A 16.93 in / 430 mm
Disc Thickness	B 1.77 in / 44.96 mm
Overall Depth	C 2.26 in / 57.4 mm
Pilot Diameter	D 7.01 in / 178.1 mm
Bolt Circle Diameter	E 8.07 in / 205 mm
Hole Diameter	F 0.59" -15
Hole Count	10
Minimum Thickness	1.53 in / 39 mm
ABS Tone Ring	Bolt-On



Cast from premium raw materials for consistent, high-grade iron

MPBR76901	
Vehicle Type	Trailer
System / Application	WABCO MAXX™
Rotor Type	U
Rotor Weight	69 lb / 32 kg
Overall Diameter	A 16.34 in / 415 mm
Disc Thickness	B 1.69 in / 42.9 mm
Overall Depth	C 5.91 in / 150.11 mm
Pilot Diameter	D 8.66 in / 220 mm
Bolt Circle Diameter	E 9.82 in / 249.4 mm
Hole Diameter	F M16-2
Hole Count	10
Minimum Thickness	1.46 in / 37 mm
ABS Tone Ring	Cast-In

Note: MPBR76901 Includes rotor, 10 rotor bolts, 10 washers.

MPBR76603	
Vehicle Type	Transit / Coach
System / Application	Knorr-Bremse SB/SN7
Rotor Type	U
Rotor Weight	81 lb / 37 kg
Overall Diameter	A 17.10 in / 434 mm
Disc Thickness	B 1.77 in / 44.96 mm
Overall Depth	C 5.35 in / 135.89 mm
Pilot Diameter	D 7.64 in / 194.06 mm
Bolt Circle Diameter	E 8.66 in / 219.96 mm
Hole Diameter	F M16-1.5
Hole Count	10
Minimum Thickness	1.45 in / 37 mm
ABS Tone Ring	No

Air Disc Brake Rotors

Molded and machined for uniformity, precision and finish

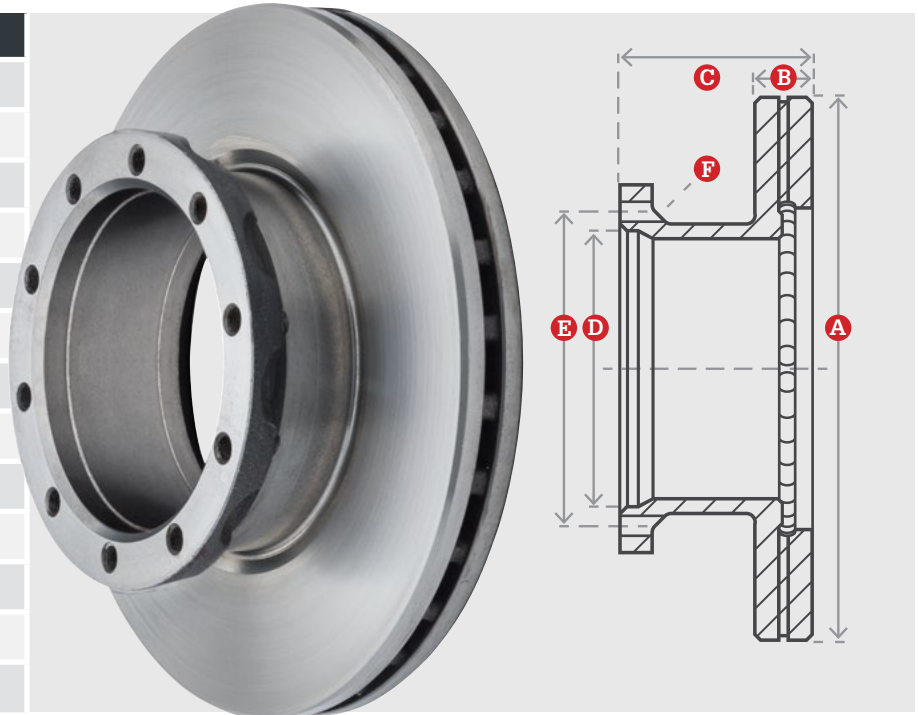
MPBR76604	
Vehicle Type	Transit / Coach
System / Application	Knorr-Bremse SB/SN7
Rotor Type	U
Rotor Weight	99 lb / 45 kg
Overall Diameter	A 17.10 in / 434 mm
Disc Thickness	B 1.77 in / 44.96 mm
Overall Depth	C 7.08 in / 179.83 mm
Pilot Diameter	D 7.64 in / 194.06 mm
Bolt Circle Diameter	E 9.84 in / 249.94 mm
Hole Diameter	F 5/8"-18
Hole Count	10
Minimum Thickness	1.45 in / 37 mm
ABS Tone Ring	Cast-In

MPBR76611	
Vehicle Type	Transit / Coach
System / Application	Knorr-Bremse SB/SN7
Rotor Type	U
Rotor Weight	74 lb / 34 kg
Overall Diameter	A 16.93 in / 430 mm
Disc Thickness	B 1.77 in / 44.96 mm
Overall Depth	C 5.16 in / 131.06 mm
Pilot Diameter	D 7.99 in / 202.95 mm
Bolt Circle Diameter	E 9.25 in / 234.95 mm
Hole Diameter	F M16-1.5
Hole Count	10
Minimum Thickness	1.45 in / 37 mm
ABS Tone Ring	No

Note: 20 mm hub flange - applications VanHool, New Flyer, MAN (Tensa), and NEOPLAN.

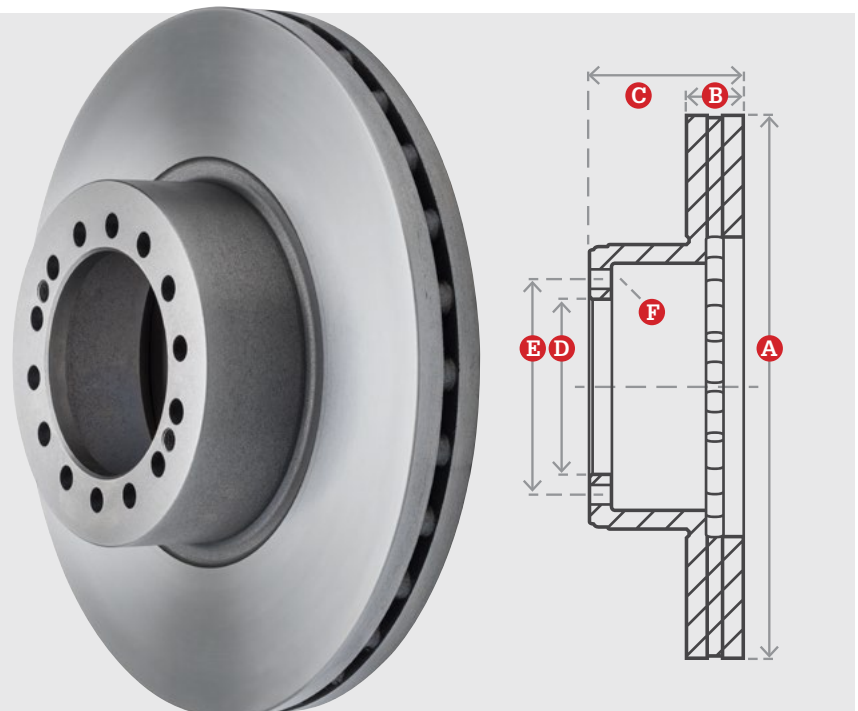
Best-performance metallurgy

MPBR76612	
Vehicle Type	Transit / Coach
System / Application	Knorr-Bremse SB/SN7
Rotor Type	U
Rotor Weight	76 lb / 35 kg
Overall Diameter	A 16.93 in / 430 mm
Disc Thickness	B 1.77 in / 44.96 mm
Overall Depth	C 5.16 in / 131.06 mm
Pilot Diameter	D 7.99 in / 202.95 mm
Bolt Circle Diameter	E 9.25 in / 234.95 mm
Hole Diameter	F M16-1.5
Hole Count	10
Minimum Thickness	1.53 in / 39 mm
ABS Tone Ring	No



Note: 22 mm hub flange - applications Nova and BCI.

MPBR76641	
Vehicle Type	Transit / Coach
System / Application	Knorr-Bremse SB/SN7
Rotor Type	Hat
Rotor Weight	78 lb / 36 kg
Overall Diameter	A 16.98 in / 431 mm
Disc Thickness	B 1.77 in / 44.96 mm
Overall Depth	C 4.54 in / 115.32 mm
Pilot Diameter	D 5.31 in / 134.87 mm
Bolt Circle Diameter	E 6.5 in / 165.10 mm
Hole Diameter	F 0.59"
Hole Count	14
Minimum Thickness	1.45 in / 37 mm
ABS Tone Ring	No

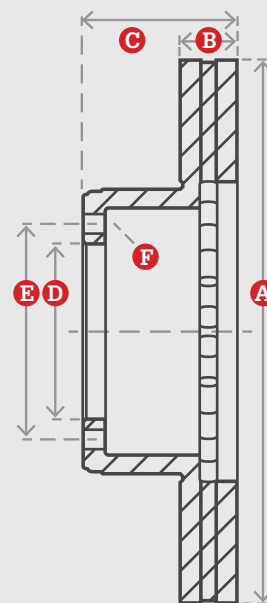


Note: 2 extra bolt holes M14x1.5.

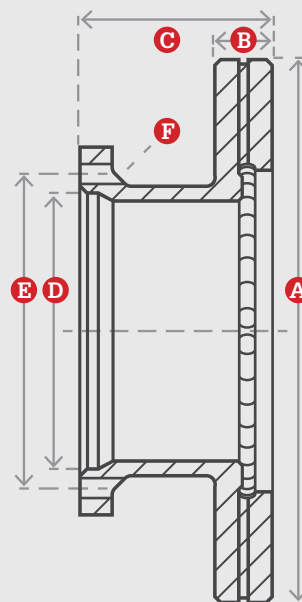
Air Disc Brake Rotors

Innovative, practical, OEM-quality products

MPBR76642	
Vehicle Type	Transit / Coach
System / Application	Knorr-Bremse SB/SN7
Rotor Type	Hat
Rotor Weight	68 lb / 31 kg
Overall Diameter	A 16.93 in / 430 mm
Disc Thickness	B 1.77 in / 44.96 mm
Overall Depth	C 4.12 in / 104.65 mm
Pilot Diameter	D 5.31 in / 134.87 mm
Bolt Circle Diameter	E 6.50 in / 165.10 mm
Hole Diameter	F 0.58"
Hole Count	14
Minimum Thickness	1.45 in / 37 mm
ABS Tone Ring	No

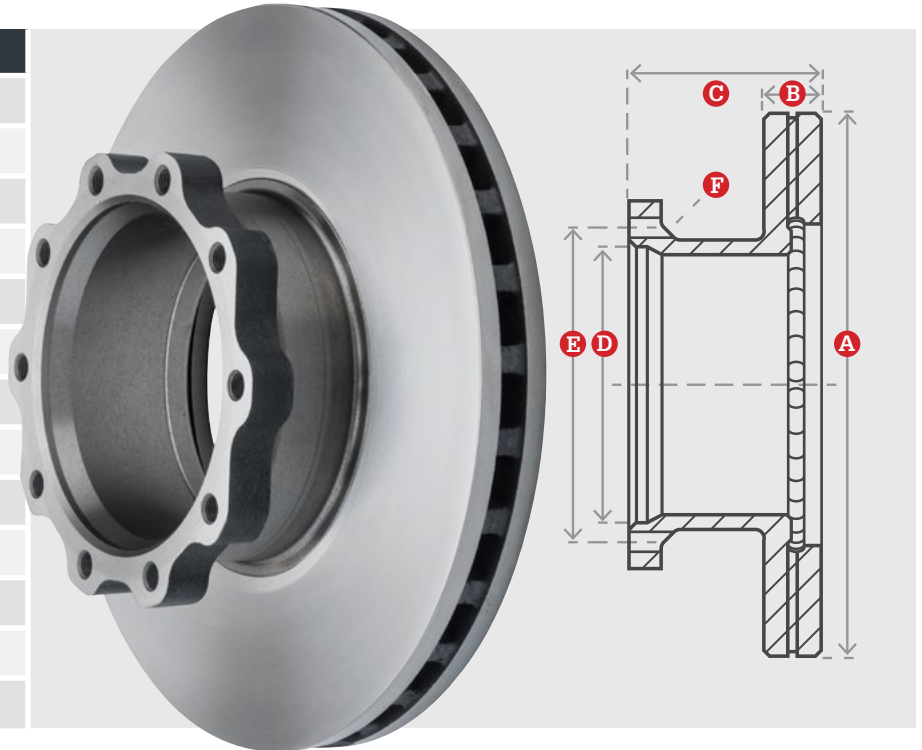


MPBR76602A	
Vehicle Type	Transit / Coach
System / Application	Meritor®
Rotor Type	U
Rotor Weight	84 lb / 38 kg
Overall Diameter	A 17.10 in / 434 mm
Disc Thickness	B 1.77 in / 44.96 mm
Overall Depth	C 5.31 in / 134.87 mm
Pilot Diameter	D 7.64 in / 194.06 mm
Bolt Circle Diameter	E 8.66 in / 219.96 mm
Hole Diameter	F M16-1.5
Hole Count	10
Minimum Thickness	1.45 in / 37 mm
ABS Tone Ring	Cast-In

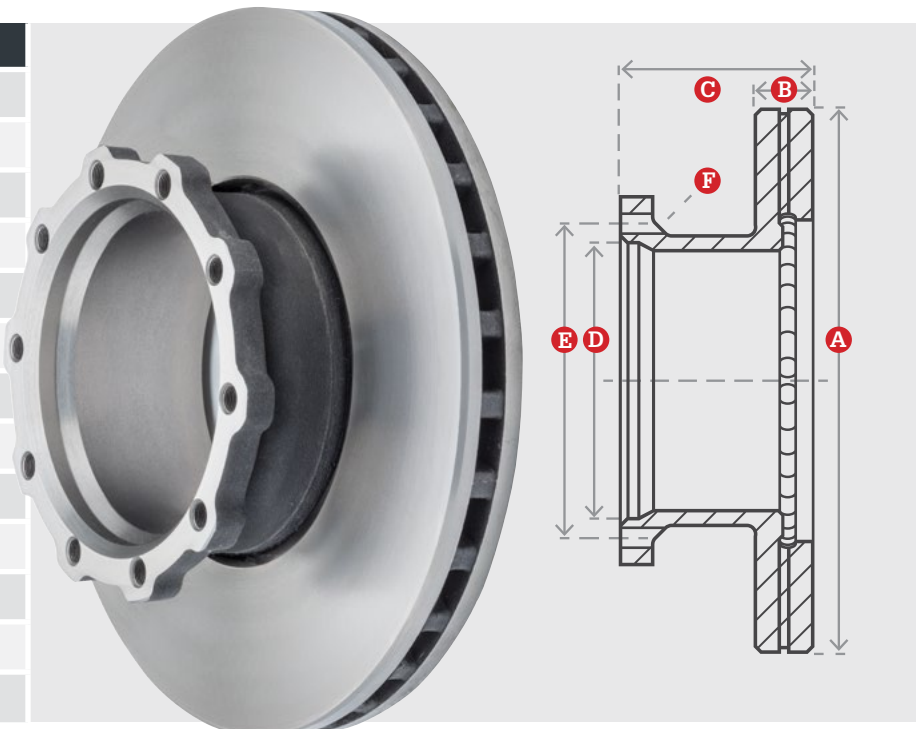


Proven to meet durability and stopping distance requirements

MPBR76605	
Vehicle Type	Transit / Coach
System / Application	Meritor®
Rotor Type	U
Rotor Weight	78 lb / 36 kg
Overall Diameter	A 17.24 in / 438 mm
Disc Thickness	B 1.80 in / 45.72 mm
Overall Depth	C 5.31 in / 134.87 mm
Pilot Diameter	D 7.87 in / 199.90 mm
Bolt Circle Diameter	E 9.00 in / 228.60 mm
Hole Diameter	F M16-1.5
Hole Count	10
Minimum Thickness	1.45 in / 37 mm
ABS Tone Ring	No



MPBR76608	
Vehicle Type	Transit / Coach
System / Application	Meritor®
Rotor Type	U
Rotor Weight	73 lb / 33 kg
Overall Diameter	A 17.10 in / 434 mm
Disc Thickness	B 1.77 in / 44.96 mm
Overall Depth	C 5.12 in / 130.05 mm
Pilot Diameter	D 8.00 in / 203.20 mm
Bolt Circle Diameter	E 9.25 in / 234.95 mm
Hole Diameter	F M16-1.5
Hole Count	10
Minimum Thickness	1.61 in / 41 mm
ABS Tone Ring	No



Air Disc Brake Rotors

Precision. Durability. Performance.

MPBR76621	
Vehicle Type	Transit / Coach
System / Application	Meritor®
Rotor Type	Hat
Rotor Weight	73 lb / 33 kg
Overall Diameter	A 17.10 in / 434 mm
Disc Thickness	B 1.77 in / 44.96 mm
Overall Depth	C 5.12 in / 130.05 mm
Pilot Diameter	D 5.15 in / 130.81 mm
Bolt Circle Diameter	E 6.61 in / 167.89 mm
Hole Diameter	F 3/4"
Hole Count	12
Minimum Thickness	1.53 in / 39 mm
ABS Tone Ring	No



MPBR76601A	
Vehicle Type	Transit / Coach
System / Application	Meritor® D-LISA
Rotor Type	U
Rotor Weight	80 lb / 36 kg
Overall Diameter	A 17.24 in / 438 mm
Disc Thickness	B 1.75 in / 44.45 mm
Overall Depth	C 5.65 in / 143.51 mm
Pilot Diameter	D 7.64 in / 194.06 mm
Bolt Circle Diameter	E 9.84 in / 249.94 mm
Hole Diameter	F 5/8" -18
Hole Count	10
Minimum Thickness	1.61 in / 41 mm
ABS Tone Ring	Bolt-On



Note: Hub pilot chamfer is 7.5 mm.

Quality medium and heavy-duty rotors for truck, trailer, and transit

MPBR76606	
Vehicle Type	Transit / Coach
System / Application	Meritor® D-LISA
Rotor Type	U
Rotor Weight	80 lb / 36 kg
Overall Diameter	A 17.10 in / 434 mm
Disc Thickness	B 1.77 in / 44.96 mm
Overall Depth	C 5.65 in / 143.51 mm
Pilot Diameter	D 7.64 in / 194.06 mm
Bolt Circle Diameter	E 9.84 in / 249.94 mm
Hole Diameter	F 5/8"-18
Hole Count	10
Minimum Thickness	1.46 in / 37 mm
ABS Tone Ring	Bolt-On



Note: Hub pilot chamfer is 22.6 mm.

MPBR76690	
Vehicle Type	Transit / Coach
System / Application	Meritor® ELSA 225-3
Rotor Type	Flat / Splined
Rotor Weight	58 lb / 26 kg
Overall Diameter	A 17.09 in / 434 mm
Disc Thickness	B 1.77 in / 44.96 mm
Overall Depth	C 1.77 in / 44.96 mm
Pilot Diameter	N/A
Bolt Circle Diameter	Splined
Hole Diameter	N/A
Hole Count	N/A
Minimum Thickness	1.45 in / 37 mm
ABS Tone Ring	No



Note: Vented rotor.

Air Disc Brake Rotors

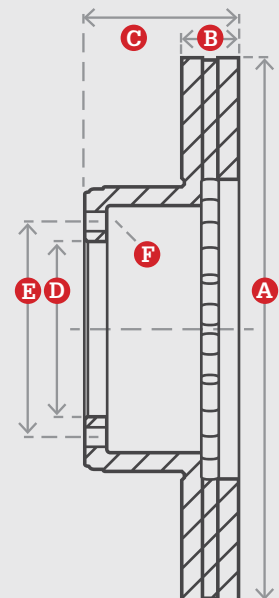
Developed and manufactured under ISO/TS 16949 standards

MPBR76691	
Vehicle Type	Transit / Coach
System / Application	Meritor® ELSA 225-3
Rotor Type	Flat / Spline
Rotor Weight	76 lb / 35 kg
Overall Diameter	A 17.09 / 434 mm
Disc Thickness	B 1.77 in / 44.96 mm
Overall Depth	C 1.77 in / 44.96 mm
Pilot Diameter	N/A
Bolt Circle Diameter	Splined
Hole Diameter	N/A
Hole Count	N/A
Minimum Thickness	1.45 in / 37 mm
ABS Tone Ring	No



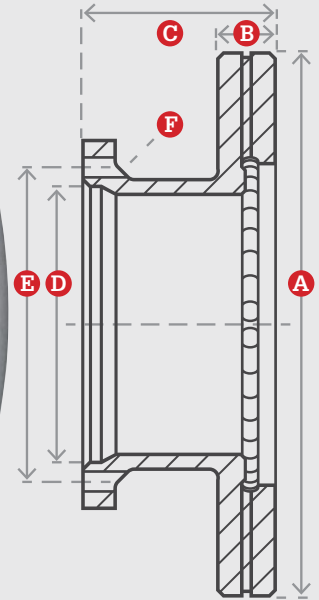
Note: Solid rotor

MPBR56641	
Vehicle Type	Transit / Coach
System / Application	Meritor® EX225
Rotor Type	Hat
Rotor Weight	76 lb / 35 kg
Overall Diameter	A 17.10 in / 434 mm
Disc Thickness	B 1.77 in / 44.96 mm
Overall Depth	C 5.19 in / 131.83 mm
Pilot Diameter	D 5.31 in / 134.87 mm
Bolt Circle Diameter	E 6.61 in / 167.89 mm
Hole Diameter	F 3/4"
Hole Count	12
Minimum Thickness	1.53 in / 39 mm
ABS Tone Ring	No

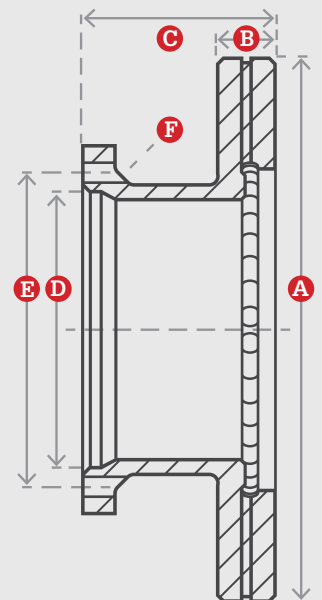


Cast from premium raw materials for consistent, high-grade iron

MPBR56642	
Vehicle Type	Transit / Coach
System / Application	Meritor® EX225
Rotor Type	U
Rotor Weight	83 lb / 38 kg
Overall Diameter	A 17.10 in / 434 mm
Disc Thickness	B 1.77 in / 44.96 mm
Overall Depth	C 5.64 in / 143.26 mm
Pilot Diameter	D 8.50 in / 215.90 mm
Bolt Circle Diameter	E 10.50 in / 266.70 mm
Hole Diameter	F 5/8"-18
Hole Count	10
Minimum Thickness	1.45 in / 37 mm
ABS Tone Ring	No



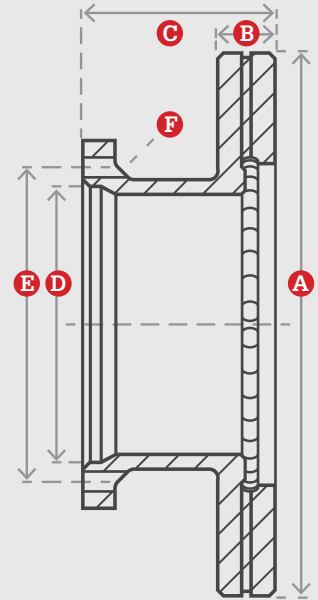
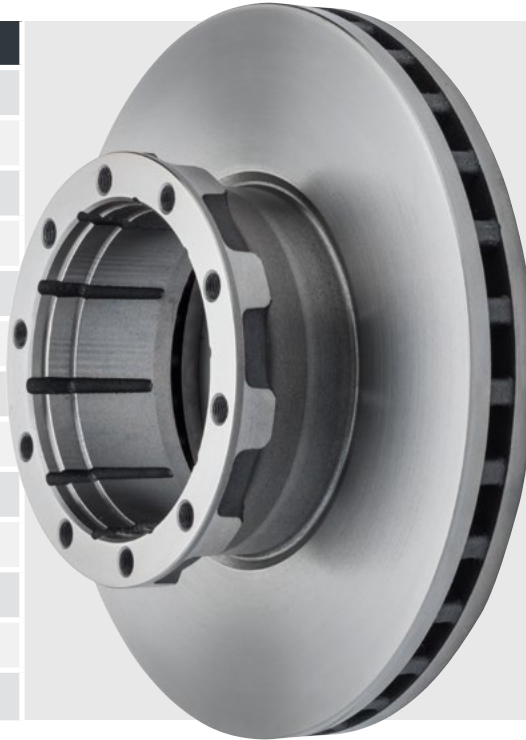
MPBR76607	
Vehicle Type	Transit / Coach
System / Application	Setra, MCI and Mercedes
Rotor Type	U
Rotor Weight	74 lb / 34 kg
Overall Diameter	A 16.93 in / 430 mm
Disc Thickness	B 1.77 in / 44.96 mm
Overall Depth	C 5.22 in / 132.59 mm
Pilot Diameter	D 8.31 in / 211.07 mm
Bolt Circle Diameter	E 9.37 in / 238.00 mm
Hole Diameter	F M14-1.5
Hole Count	10
Minimum Thickness	1.45 in / 37 mm
ABS Tone Ring	No



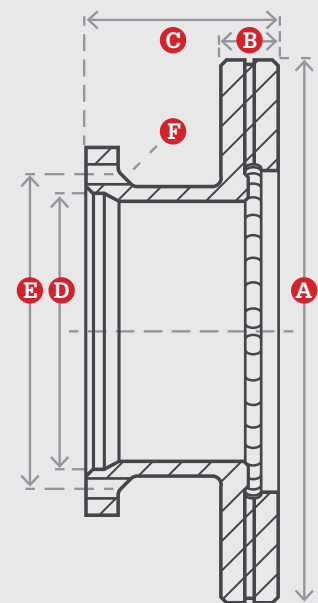
Air Disc Brake Rotors

Molded and machined for uniformity, precision and finish

MPBR76609	
Vehicle Type	Transit / Coach
System / Application	Setra and Mercedes
Rotor Type	U
Rotor Weight	71 lb / 32 kg
Overall Diameter	A 17.01 in / 432 mm
Disc Thickness	B 1.77 in / 44.96 mm
Overall Depth	C 5.31 in / 134.87 mm
Pilot Diameter	D 7.64 in / 194.06 mm
Bolt Circle Diameter	E 8.66 in / 219.96 mm
Hole Diameter	F M16-1.5
Hole Count	10
Minimum Thickness	1.37 in / 35 mm
ABS Tone Ring	No

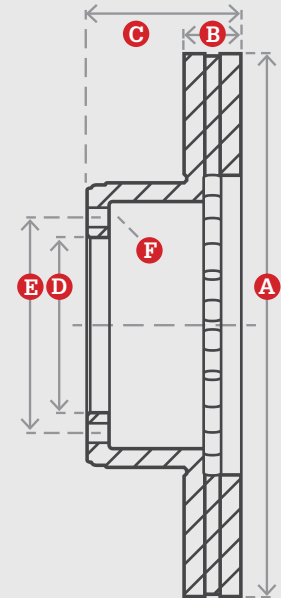


MPBR76610	
Vehicle Type	Transit / Coach
System / Application	Van Hool
Rotor Type	U
Rotor Weight	81 lb / 37 kg
Overall Diameter	A 16.93 in / 430 mm
Disc Thickness	B 1.77 in / 44.96 mm
Overall Depth	C 5.16 in / 131.06 mm
Pilot Diameter	D 7.99 in / 202.95 mm
Bolt Circle Diameter	E 9.25 in / 234.95 mm
Hole Diameter	F M16-1.5
Hole Count	10
Minimum Thickness	1.45 in / 37 mm
ABS Tone Ring	Cast-In

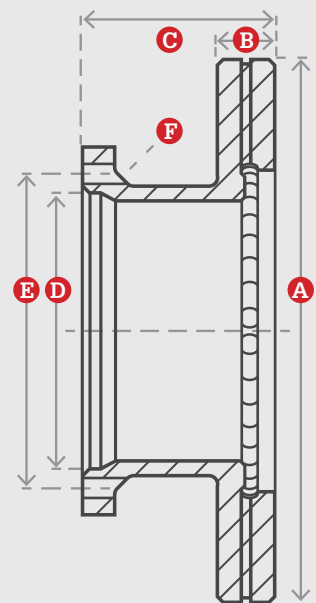
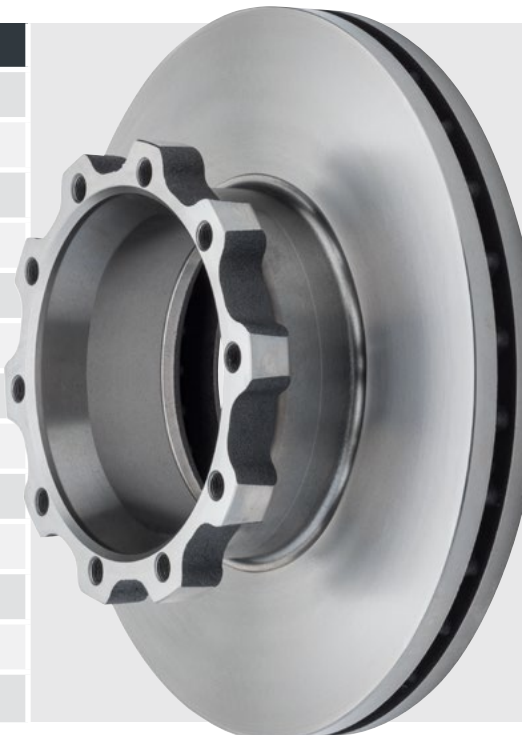


Best-performance metallurgy

MPBR76615	
Vehicle Type	Transit / Coach
System / Application	Setra and Mercedes
Rotor Type	Hat
Rotor Weight	77 lb / 35 kg
Overall Diameter	A 16.93 in / 430 mm
Disc Thickness	B 1.77 in / 44.96 mm
Overall Depth	C 5.63 in / 143.00 mm
Pilot Diameter	D 5.16 in / 131.06 mm
Bolt Circle Diameter	E 6.61 in / 167.89 mm
Hole Diameter	F 0.83"
Hole Count	10
Minimum Thickness	1.45 in / 37 mm
ABS Tone Ring	No



MPBR76616	
Vehicle Type	Transit / Coach
System / Application	New Flyer® and MAN
Rotor Type	U
Rotor Weight	80 lb / 36 kg
Overall Diameter	A 17.01 in / 432 mm
Disc Thickness	B 1.77 in / 44.96 mm
Overall Depth	C 8.19 in / 208.03 mm
Pilot Diameter	D 5.31 in / 134.87 mm
Bolt Circle Diameter	E 9.25 in / 234.95 mm
Hole Diameter	F M16-1.5
Hole Count	10
Minimum Thickness	1.37 in / 35 mm
ABS Tone Ring	No



Air Disc Brake Rotors



Standard and metric specs for Midland truck, trailer, and transit rotors

Part Number	Vehicle Type	System / Application	Rotor Type	Rotor Weight (lb) (kg)	Overall Diameter (in) (mm)	Disc Thickness (in) (mm)	Overall Depth (in) (mm)	Pilot Diameter (in) (mm)	Bolt Circle Diameter (in) (mm)	Hole Diameter	Hole Count	Minimum Thickness (in) (mm)	ABS Tone Ring
MPBR71603	Truck	WABCO PAN™ 19-1	U	63 29	14.76 375	1.77 44.96	5.75 146.05	7.05 179.07	8.23 209.04	M14 x 1.5	10	1.57 40	Cast-In
MPBR71604	Truck	WABCO PAN™ 19-1	Hat	52 24	17.09 434	1.77 44.96	3.90 99.06	4.61 117.09	5.67 144.02	14.99	10+2	1.57 40	No
MPBR76810	Truck	Haldex DB22LT	U	76 35	16.93 430	1.77 44.96	5.90 149.86	8.66 219.96	9.82 249.43	0.63"-11	10	1.63 41	Cast-In
MPBR73601	Truck	Meritor® ADB-1560	U	66 30	15.24 387	1.75 44.45	5.77 146.56	9.45 240.03	11.25 285.75	0.81"	10	1.63 41	No
MPBR74601	Truck	Meritor® ADB-1560	U	65 30	15.24 387	1.75 44.45	6.12 155.45	8.76 222.50	11.25 285.75	0.82"	10	1.63 41	No
MPBR76620	Truck	Meritor® EX225	U	83 38	16.93 430	1.77 44.96	6.28 159.51	8.13 206.50	11.25 285.75	M16-1.5	10	1.53 39	No
MPBR76624	Truck	Meritor® EX225L	Flat	70 32	17.09 434	1.77 44.96	2.09 53.09	6.56 166.62	7.86 199.64	0.66"	10	1.46 37	Bolt-On
MPBR76628	Truck	Meritor® EX225L	Flat	70 32	17.09 434	1.77 44.96	2.09 53.09	6.56 166.62	7.86 199.64	0.66"	10	1.46 37	Bolt-On
MPBR76694	Truck / Trailer	Bendix® / Knorr-Bremse ADB22X	Flat / Spline	56 25	17.00 432	1.77 44.96	1.77 44.96	9.05 229.87	N/A N/A	N/A	N/A	1.46 37	No
MPBR76617	Truck / Trailer	Bendix® / Knorr-Bremse ADB22X™ and ADB225™	U	76 35	16.93 430	1.77 44.96	5.91 150.11	8.66 219.96	9.84 249.94	5/8"-11	10	1.46 37	No
MPBR76618	Truck / Trailer	Bendix® / Knorr-Bremse ADB22X™ and ADB225™	U	74 34	16.93 430	1.77 44.96	5.45 138.43	8.66 219.96	9.84 249.94	5/8"-11	10	1.46 37	No
MPBR76801	Truck / Trailer	WABCO PAN™ 22	Flat	71 32	16.93 430	1.77 44.96	2.09 53.09	6.56 166.62	7.86 199.64	5/8"-18	10	1.53 39	Bolt-On
MPBR75180	Trailer	WABCO PAN™ 17	U	42 19	12.80 325	1.34 34.04	5.85 148.59	6.81 172.97	7.72 196.09	M14-2	8	1.11 28	Cast-In
MPBR71601	Trailer	WABCO PAN™ 19	U	61 28	14.84 377	1.77 44.96	5.91 150.11	8.66 219.96	9.82 249.43	M16-2	10	1.53 39	Cast-In
MPBR71680	Trailer	WABCO PAN™ 19	U	57 26	14.76 375	1.77 44.96	5.45 138.43	6.65 168.91	7.72 196.09	M14-2	8	1.45 37	Cast-In
MPBR76613	Trailer	WABCO PAN™ 22	U	71 32	16.93 430	1.77 44.96	5.91 150.11	8.66 219.96	9.82 249.43	M16-2	10	1.53 39	Cast-In
MPBR76619	Trailer	WABCO PAN™ 22	U	71 32	16.93 430	1.77 44.96	5.91 150.11	8.65 219.71	9.82 249.43	M16-2	10	1.50 38	Cast-In
MPBR76626	Trailer	SAF-HOLLAND	Flat	71 32	16.93 430	1.77 44.96	2.26 57.40	7.01 178.10	8.07 205.00	0.59"-15	10	1.53 39	Bolt-On
MPBR76901	Trailer	WABCO MAXX™	U	69 32	16.34 415	1.69 42.90	5.91 150.11	8.66 220.00	9.82 249.40	M16-2	10	1.46 37	Cast-In
MPBR76603	Transit / Coach	Knorr-Bremse SB/SN7	U	81 37	17.10 434	1.77 44.96	5.35 135.89	7.64 194.06	8.66 219.96	M16-1.5	10	1.45 37	No
MPBR76604	Transit / Coach	Knorr-Bremse SB/SN7	U	99 45	17.10 434	1.77 44.96	7.08 179.83	7.64 194.06	9.84 249.94	5/8"-18	10	1.45 37	Cast-In
MPBR76611	Transit / Coach	Knorr-Bremse SB/SN7	U	74 34	16.93 430	1.77 44.96	5.16 131.06	7.99 202.95	9.25 234.95	M16-1.5	10	1.45 37	No
MPBR76612	Transit / Coach	Knorr-Bremse SB/SN7	U	76 35	16.93 430	1.77 44.96	5.16 131.06	7.99 202.95	9.25 234.95	M16-1.5	10	1.53 39	No
MPBR76641	Transit / Coach	Knorr-Bremse SB/SN7	Hat	78 36	16.98 431	1.77 44.96	4.54 115.32	5.31 134.87	6.50 165.10	0.59"	14	1.45 37	No
MPBR76642	Transit / Coach	Knorr-Bremse SN7	Hat	68 31	16.93 430	1.77 44.96	4.12 104.65	5.31 134.87	6.50 165.10	0.58"	14	1.45 37	No
MPBR76602A	Transit / Coach	Meritor®	U	84 38	17.10 434	1.77 44.96	5.31 134.87	7.64 194.06	8.66 219.96	M16-1.5	10	1.45 37	Cast-In
MPBR76605	Transit / Coach	Meritor®	U	78 36	17.24 438	1.80 45.72	5.31 134.87	7.87 199.90	9.00 228.60	M16-1.5	10	1.45 37	No
MPBR76608	Transit / Coach	Meritor®	U	73 33	17.10 434	1.77 44.96	5.12 130.05	8.00 203.20	9.25 234.95	M16-1.5	10	1.61 41	No
MPBR76621	Transit / Coach	Meritor®	Hat	73 33	17.10 434	1.77 44.96	5.12 130.05	5.15 130.81	6.61 167.89	3/4"	12	1.53 39	No
MPBR76601A	Transit / Coach	Meritor® D-LISA	U	80 36	17.24 438	1.75 44.45	5.65 143.51	7.64 194.06	9.84 249.94	5/8"-18	10	1.61 41	Bolt-On
MPBR76606	Transit / Coach	Meritor® D-LISA	U	80 36	17.10 434	1.77 44.96	5.65 143.51	7.64 194.06	9.84 249.94	5/8"-18	10	1.46 37	Bolt-On
MPBR76690	Transit / Coach	Meritor® ELSA 225-3	Flat / Spline	58 26	17.09 434	1.77 44.96	1.77 44.96	N/A N/A	Splined Splined	N/A	N/A	1.45 37	No
MPBR76691	Transit / Coach	Meritor® ELSA 225-3	Flat / Spline	76 35	17.09 434	1.77 44.96	1.77 44.96	N/A N/A	Splined Splined	N/A	N/A	1.45 37	No
MPBR56641	Transit / Coach	Meritor® EX225	Hat	76 35	17.10 434	1.77 44.96	5.19 131.83	5.31 134.87	6.61 167.89	3/4"	12	1.53 39	No
MPBR56642	Transit / Coach	Meritor® EX225	U	83 38	17.10 434	1.77 44.96	5.64 143.26	8.50 215.90	10.50 266.70	5/8"-18	10	1.45 37	No
MPBR76607	Transit / Coach	Setra, MCI and Mercedes	U	74 34	16.93 430	1.77 44.96	5.22 132.59	8.31 211.07	9.37 238.00	M14-1.5	10	1.45 37	No
MPBR76609	Transit / Coach	Setra and Mercedes	U	71 32	17.01 432	1.77 44.96	5.31 134.87	7.64 194.06	8.66 219.96	M16-1.5	10	1.37 35	No
MPBR76610	Transit / Coach	Van Hool	U	81 37	16.93 430	1.77 44.96	5.16 131.06	7.99 202.95	9.25 234.95	M16-1.5	10	1.45 37	Cast-In
MPBR76615	Transit / Coach	Setra and Mercedes	Hat	77 35	16.93 430	1.77 44.96	5.63 143.00	5.16 131.06	6.61 167.89	0.83"	10	1.45 37	No
MPBR76616	Transit / Coach	New Flyer® and MAN	U	80 36	17.01 432	1.77 44.96	8.19 208.03	5.31 134.87	9.25 234.95	M16-1.5	10	1.37 35	No

Air Disc Brake Rotors

Identifying problems during rotor inspection



Know the indicators for rotor damage, repair and replacement.

Hazard Alert Messages

Please observe the warnings and recommendations that follow. They may help prevent serious personal injury, damage to brake system components, or both.

Warning

- To prevent eye injury, always wear eye protection when performing vehicle maintenance or service.
- Do not work under vehicles supported only by jacks. Jacks may slip and fall. Serious personal injury and component damage may result.
- Park vehicle on a stable, level surface. Block wheels to prevent vehicle movement. Support vehicle with safety stands.

Warning

- Brake linings may contain materials with long-term effects to health. Use caution when handling and working around brake lining materials.

Air disc brake rotor inspection

Disc brake inspection should be a part of every pre-trip or preventive maintenance routine.

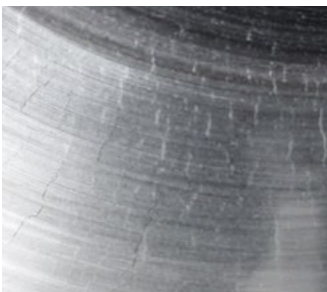
Warning

Follow shop safety procedures before and during vehicle inspections.

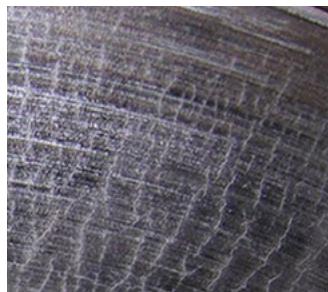
1. Lift and support axles with safety stands. See vehicle manufacturer recommendations.
2. Remove wheels from hub.
3. Rotate hub and visually inspect both sides of rotor for out-of-service conditions detailed in this section. If these conditions are discovered, remove hub and replace rotor.

Heat Checking

Checking is caused by repeated heating and cooling of braking surfaces. Heat checks are short, thin, radial interruptions in the braking surface resembling multiple small and medium-size cracks.



Light heat checking



Heavy heat checking

Cracking

Heat checks may wear away with use or may become actual cracks or fractures in the rotor disc.

Replace rotors if cracks become over 0.060" wide, over 0.060" deep or extend over 75% of the disc surface.

Rotor cracking may be caused by mishandling, brake imbalance, wear beyond thickness tolerance, or improper operation. Replace rotor if a crack extends through the disc or the mounting section.

Replace badly cracked rotors immediately.

A cracked rotor that is still considered operational should be re-inspected regularly to ensure a crack has not expanded.



Acceptable cracking



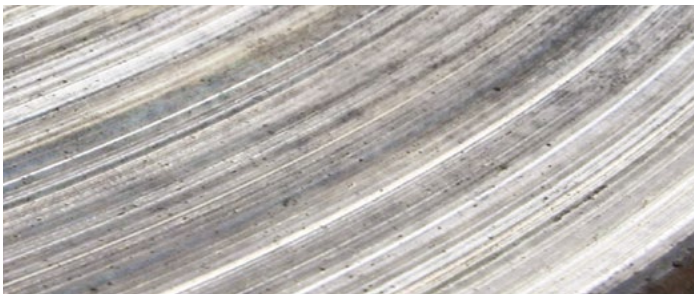
Unacceptable cracking

Air Disc Brake Rotors

Identifying problems during rotor inspection

Grooving and Scoring

Scores or grooves are often caused by contaminants between linings and rotors, worn linings, or lining plate contact. Grooves or scores on rotors are unacceptable if they exceed 0.060" deep. Replace rotor if the groove or score depth compromises minimum thickness specifications for the disc.

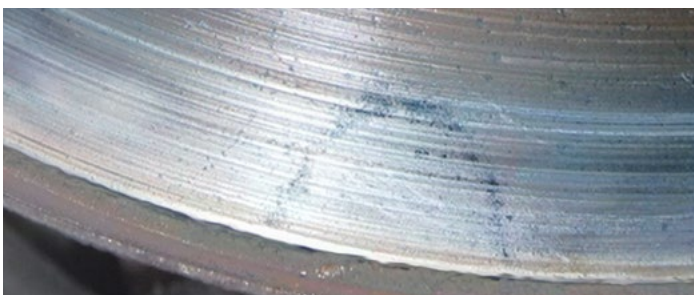


Groove and scoring damage to rotor braking surface

Bluing and Banding

Friction generates heat. Brakes operate at high temperatures. But continued hard stops or improper operation or adjustment may cause rotors to be discolored with blue marks or bands.

It is not necessary to replace discolored rotors that still meet runout and thickness specifications, but the cause of overheating should be identified and repaired before returning vehicle to service.

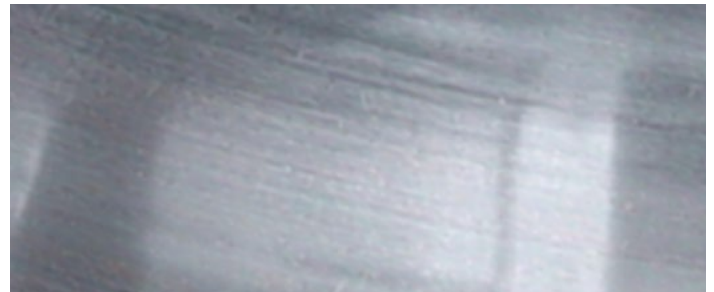


Disc bluing and banding

Polishing

Polished rotors are easy to spot. They exhibit a mirror-like braking surface which may be caused by lightly dragging brakes, improper pad selection, or a resurfacing that is machined too finely.

To correct polishing, sand the disc surface and brake pads with 80 grit emery cloth to a finish between 120 and 150 RMS. Sanding is recommended with each relining. If polishing recurs, check friction rating on brake pads to be sure they suit your application.



Polished rotors require surface sanding

Martensite Spotting

Extremely high temperatures may cause changes to the metallic substructure of rotor materials. Rotors subjected to high heat and rapid cooling may develop Martensite; dark heat spots on the rotor that are hard, raised and brittle.

This condition may damage the integrity of the rotor, making it more susceptible to cracking and uneven wear. Rotors in this condition should be replaced.

Check brake pads for uneven wear and replace as necessary. Once hub and rotor are reinstalled, check brake system for proper balance.

*Martensite spotting*

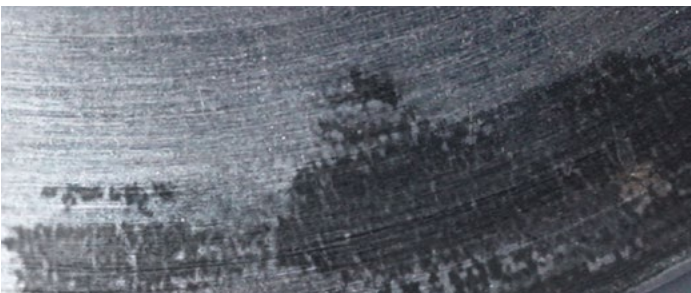
Grease and Oil Staining

Brake rotors with surfaces discolored by grease or oil should be removed from the vehicle and cleaned to remove the grease or oil. Inspect and replace pads if contaminated with grease or oil. Source of contamination should be identified and repaired before returning vehicle to service.

Lining Transfer

High operating temperatures or improper lining material may result in brake lining transfer, in which a layer of lining material becomes welded to the rotor surface. This condition often worsens over time, accelerating lining wear.

Buildup may be removed by resurfacing the brake rotor. Cause of high operating temperatures should be identified and repaired before returning vehicle to service.

*Lining transfer*

Vent Clogging

Off-road and severe-duty applications may result in rotor disc venting becoming clogged by debris such as dirt and sand. Vent holes should be cleaned to allow air flow and disc heat dispersion.

Runout

Runout or wobble on the braking surface should not exceed 0.020" in one revolution of the rotor. Measurements should be taken with a dial indicator at the center of the rotor braking surface.

Runout measurement should not include the end play of wheel bearings. If runout measurement exceeds 0.020", end play of wheel bearings should be checked. If end play is greater than manufacturer recommendations, wheel bearings should be adjusted. Replace rotor if radial runout on the outer diameter of the braking surface exceeds 0.035" when checked with a dial indicator.

Thickness

Rotor thickness should be measured in three places; the center, middle and outer edge of the rotor, using a micrometer. Replace rotor if thickness varies more than 0.005" between any two points.

Resurfacing

Midland does not recommend rotor resurfacing that substantially alters the dimensions of the rotor. If resurfacing is deemed necessary, be sure that at least 0.060" of material remains above the minimum disc thickness to allow for operating wear.

Air Disc Brake Rotors

Competitive Brand Part Number Cross Reference

Competitor	Competitor Part No.	Midland Part No.
Abex	ADR180405	MPBR76606
Abex	ADR180406	MPBR76617
Abex	ADR180407	MPBR76618
Abex	ADR180408	MPBR76612
Abex	ADR180450	MPBR76641
Abex	ADR180451	MPBR76603
Abex	ADR180452	MPBR76604
Abex	ADR180453	MPBR56642
Abex	ADR180456	MPBR76694
Abex	ADR180457	MPBR76642
Abex	ADR180716	MPBR75180
Abex	ADR180717	MPBR56641
Abex	ADR180718	MPBR76613
Abex	ADR180719	MPBR71601
Automann®	153.134	MPBR76619
BCI	230807	MPBR76612
Bendix® / Knorr-Bremse	67801B	MPBR76611
Bendix® / Knorr-Bremse	802081	MPBR76618
Bendix® / Knorr-Bremse	802082	MPBR76617
Bendix® / Knorr-Bremse	802669	MPBR76641
Bendix® / Knorr-Bremse	802569	MPBR76694
Bendix® / Knorr-Bremse	1I310251	MPBR76611
Bendix® / Knorr-Bremse	1I37191	MPBR76611
Bendix® / Knorr-Bremse	1I37415N	MPBR76603
Bendix® / Knorr-Bremse	1I37986	MPBR76604
Bendix® / Knorr-Bremse	K000332	MPBR76617
Bendix® / Knorr-Bremse	K000758	MPBR76618
Bendix® / Knorr-Bremse	K012739	MPBR76694
Bendix® / Knorr-Bremse	K013569	MPBR76642
Bendix® / Knorr-Bremse	K021958	MPBR76612
Bendix® / Knorr-Bremse	K021959	MPBR76604
Bendix® / Knorr-Bremse	K034497BXW	MPBR76642
Bendix® / Knorr-Bremse	K038573	MPBR76618
Bendix® / Knorr-Bremse	K038574	MPBR76617
Bendix® / Knorr-Bremse	K069333	MPBR76616
Bendix® / Knorr-Bremse	K069799	MPBR76621
Bendix® / Knorr-Bremse	K110358	MPBR76617
Bendix® / Knorr-Bremse	Z000557	MPBR76642
Bendix® / Knorr-Bremse	Z006407	MPBR76641
Centric®	120.86015	MPBR71604
Centric®	120.86016	MPBR71603
ConMet®	10016195 (rotor pn), superseded by 10084199	MPBR76801
ConMet®	10018609 (service kit)	MPBR76801
ConMet®	10020109	MPBR76620
ConMet®	10020682	MPBR76620
ConMet®	10023879	MPBR76694
ConMet®	10025445	MPBR76694
ConMet®	10034621	MPBR76624
ConMet®	10034621	MPBR76628
ConMet®	10041006	MPBR76617
ConMet®	10041216	MPBR76628
ConMet®	10041218	MPBR76624
ConMet®	10080753	MPBR56642
ConMet®	10082074	MPBR76617
ConMet®	10082181	MPBR56642
Dayton®	125500	MPBR76901
Dayton®	125705	MPBR76619
Dayton®	125802	MPBR76617
Dayton®	125083	MPBR76618
Dayton®	125084	MPBR76694
Dayton®	125600	MPBR56642
Dayton®	125704	MPBR75180
Dayton®	125702	MPBR71601

Competitor	Competitor Part No.	Midland Part No.
Dayton®	125700	MPBR76613
Dayton®	125701	MPBR76801
Dennis®	658470/39	MPBR76642
DuraBrake™	56641	MPBR56641
DuraBrake™	56642	MPBR56642
DuraBrake™	71601	MPBR71601
DuraBrake™	71603	MPBR71603
DuraBrake™	71604	MPBR71604
DuraBrake™	71680	MPBR71680
DuraBrake™	73601	MPBR73601
DuraBrake™	74601	MPBR74601
DuraBrake™	75180	MPBR75180
DuraBrake™	76601A	MPBR76601A
DuraBrake™	76602A	MPBR76602A
DuraBrake™	76603	MPBR76603
DuraBrake™	76604	MPBR76604
DuraBrake™	76605	MPBR76605
DuraBrake™	76606	MPBR76606
DuraBrake™	76607	MPBR76607
DuraBrake™	76608	MPBR76608
DuraBrake™	76609	MPBR76609
DuraBrake™	76610	MPBR76610
DuraBrake™	76611	MPBR76611
DuraBrake™	76612	MPBR76612
DuraBrake™	76613	MPBR76613
DuraBrake™	76615	MPBR76615
DuraBrake™	76616	MPBR76616
DuraBrake™	76617	MPBR76617
DuraBrake™	76618	MPBR76618
DuraBrake™	76619	MPBR76619
DuraBrake™	76620	MPBR76620
DuraBrake™	76621	MPBR76621
DuraBrake™	76624	MPBR76624
DuraBrake™	76628	MPBR76628
DuraBrake™	76626	MPBR76626
DuraBrake™	76641	MPBR76641
DuraBrake™	76642	MPBR76642
DuraBrake™	76690	MPBR76690
DuraBrake™	76691	MPBR76691
DuraBrake™	76694	MPBR76694
DuraBrake™	76801	MPBR76801
DuraBrake™	76810	MPBR76810
DuraBrake™	76901	MPBR76901
Freightliner®	TDA3218K167	MPBR74601
Fuwa®	H32-D002	MPBR76619
FGI	SSR949	MPBR76901
Gillig	82-72789-00	MPBR76612
Gunite®	R6085	MPBR73601
Gunite®	R6086	MPBR74601
Gunite®	R6200	MPBR73601
Gunite®	R6206M	MPBR76810
Hendrickson®	D-34172	MPBR76619
Hendrickson®	D-34172	MPBR76619
Hendrickson®	S-34172	MPBR76619
Hendrickson®	S-34172	MPBR76619
Hendrickson®	S-34471	MPBR76901
Hendrickson®	S-36661-1	MPBR76801
Hendrickson®	S-37434-1 / S-37434-2 (kit)*	MPBR76901
Mack®	8235-3218K167	MPBR74601
MAN (Temsas)	501.316.953	MPBR76611
MAN (Temsas)	81.50803.0021	MPBR76616
MAN (Temsas)	81.50803.0040	MPBR76621
MAN (Temsas)	81.50803.0041	MPBR76616

Competitor	Competitor Part No.	Midland Part No.
MCI	04-04-1107	MPBR76612
MCI	15-02-1010	MPBR76601A
MCI	15-02-1043	MPBR56641
MCI	15-02-1067	MPBR56641
MCI	15-02-1081	MPBR76612
MCI	15-03-1012	MPBR56642
MCI	15-05-1010	MPBR76601A
MCI	A942.423.00.12	MPBR76607
Meritor®	123547	MPBR76601A
Meritor®	123642	MPBR56642
Meritor®	123647	MPBR76606
Meritor®	3218-Z-1404	MPBR76601A
Meritor®	3218-Z-1404	MPBR76601A
Meritor®	3218-Z-156	MPBR73601
Meritor®	3218-Z-156	MPBR73601
Meritor®	3218-K-167	MPBR74601
Meritor®	68323012	MPBR76608
Meritor®	68323736	MPBR76602A
Meritor®	68325977	MPBR76602A
Meritor®	68326014	MPBR56641
Meritor®	M44AD75180	MPBR75180
Meritor®	M44AD76603	MPBR76603
Meritor®	M44AD76604	MPBR76604
Meritor®	M44AD76605	MPBR76605
Meritor®	M44AD76612	MPBR76612
Meritor®	M44D6206	MPBR76810
Meritor®	M44D71601	MPBR71601
Meritor®	M44D75180	MPBR75180
Meritor®	M44D76603	MPBR76603
Meritor®	M44D76604	MPBR76604
Meritor®	M44D76612	MPBR76612
Meritor®	M44D76613	MPBR76613
Meritor®	M44D76617	MPBR76617
Meritor®	M44D76618	MPBR76618
Meritor®	M44D76619	MPBR76619
Meritor®	M44D76621	MPBR76621
Meritor®	M44D76641	MPBR76641
Meritor®	M44D76642	MPBR76642
Meritor®	M44D76690	MPBR76690
Meritor®	M44D76691	MPBR76691
Meritor®	M44D76692	MPBR76694
Meritor®	M44DH41216	MPBR76624
Meritor®	M44DH41216	MPBR76628
Meritor®	M44DH18609	MPBR76801
NABI®	6316229	MPBR76606
NABI®	6333812	MPBR76606
NEOPLAN	QG08.00.001.001	MPBR76611
New Flyer®	6316229	MPBR76606
New Flyer®	6331333	MPBR76611
New Flyer®	6347297	MPBR76621
New Flyer®	6359347	MPBR76616
New Flyer®	6407925	MPBR76612
NOVA	N8884457	MPBR76612
PACCAR	1400069	MPBR76604
PACCAR	1400284	MPBR71603
Prevost®	611188	MPBR76603
Prevost®	611300	MPBR76641
Prevost®	611455	MPBR76603
Prevost®	611456	MPBR76603
Prevost®	611457	MPBR76604
Prevost®	621672	MPBR76604
Ridewell®	1660363	MPBR76619
SAF	51830036	MPBR76626
SAF	2019200000010	MPBR76626

Competitor	Competitor Part No.	Midland Part No.
Setra	6231000870	MPBR76609
Setra	9424210912	MPBR76607
Setra	9424211012	MPBR76607
Setra	9424211112	MPBR76607
Setra	9424211212	MPBR76607
Setra	9424212112	MPBR76607
Setra	9424230012	MPBR76607
Setra	9424230112	MPBR76607
Setra	A6274210012	MPBR76609
Setra	A9424212112	MPBR76607
Setra	A9424230012	MPBR76607
Setra	A9434210312	MPBR76615
Setra	A9434210412	MPBR76615
Van Hool	10721062	MPBR76602A
Van Hool	10977055	MPBR76602A
Van Hool	11027856	MPBR76608
Van Hool	11047678	MPBR76610
Van Hool	11353913	MPBR76610
Van Hool	920924972	MPBR76611
Van Hool	N508030009	MPBR76605
Van Hool	N508030038	MPBR76621
Van Hool	N508030040	MPBR76621
Volvo	20428193	MPBR76690
Volvo	21575071	MPBR76690
Volvo	3092710	MPBR76691
Volvo	3988838	MPBR76691
Volvo	85103803	MPBR76690
Volvo	85110496	MPBR76690
Volvo	8551042	MPBR76691
WABCO	CT807	MPBR76613
WABCO	CT808	MPBR71680
WABCO	CT826	MPBR75180
WABCO	CT832	MPBR71601
WABCO	F34-009E	MPBR76613
WABCO	12999759VT	MPBR71603
WABCO	12999760VT	MPBR71604
WABCO	6629056112	MPBR76901
WABCO	6.63E+09	MPBR76901
Webb®	54220P	MPBR56641
Webb®	55030PK-65	MPBR75180
Webb®	55031PK-65	MPBR71601
Webb®	55032PK-65	MPBR76613
Webb®	55035	MPBR76901
Webb®	55035PK*	MPBR76901
Webb®	55040P	MPBR76621
Webb®	55060P	MPBR56642
Webb®	55070P	MPBR76606
Webb®	55075P	MPBR76601A
Webb®	55080F	MPBR76641
Webb®	55080P	MPBR76641
Webb®	55090P	MPBR76810
Webb®	55097P	MPBR76619
Webb®	56020P	MPBR76616
Webb®	56022P	MPBR76603
Webb®	56024P	MPBR76612
Webb®	56026P	MPBR76607
Webb®	56050P	MPBR76604
Webb®	56089K	MPBR76626
Webb®	56095P	MPBR76617
Webb®	56096P	MPBR76618
ZF	0501.316.075	MPBR76602A
ZF	4474.375.211	MPBR76612
ZF	81.508.030.009	MPBR76605
ZF	81.508.030.040	MPBR76621

Quality medium and heavy-duty rotors for truck, trailer, and transit

We didn't reinvent the wheel. We improved the brake.

Air disc brakes can help increase safety and brake system performance while they reduce liability, fines, and downtime. Air disc brakes are being specified more often on new trucks, trailers and buses – and being retrofit on older vehicles – to deliver the advantages of this technology.

Dedicated to building the best in brake rotors:

- Clean, homogenous metal alloys with higher carbon content to increase strength, machinability, and longevity
- Engineered and precision manufactured for perfect fit and alignment within specific commercial vehicle systems
- Resistant to the heat damage and wear of heavy-and-severe-duty applications

The Midland line of rotors covers a broad range of the most popular vehicles and applications. We balance our product offerings to bring you the best of the best – along with the value and responsive service you expect from Midland.

The Midland brand offers a wide selection of quality parts for every commercial vehicle application and lifecycle stage.

